

NAISH

ESTATE AGENTS



YORK  
EST. 1939



65 Main Street

, Bishopthorpe, YO23 2RA

Asking Price £450,000



3



2



2



D



# 65 Main Street



## Description

This beautiful semi detached cottage has recently been modernised and refurbished throughout including a full loft conversion. and is situated along Main Street in the wonderful village of Bishopthorpe.

Bishopthorpe is 2 miles from York City Centre and offers three award winning pubs as well as a social club, multiple hair salons, a Co-Op, riverside restaurants, tennis, football and cricket club and much more which explains why it such a desirable place to reside. The village has easy access to the A64 and an excellent primary school. Bishopthorpe falls into the catchment for Fulford, Tadcaster Grammar and Millthorpe High Schools.

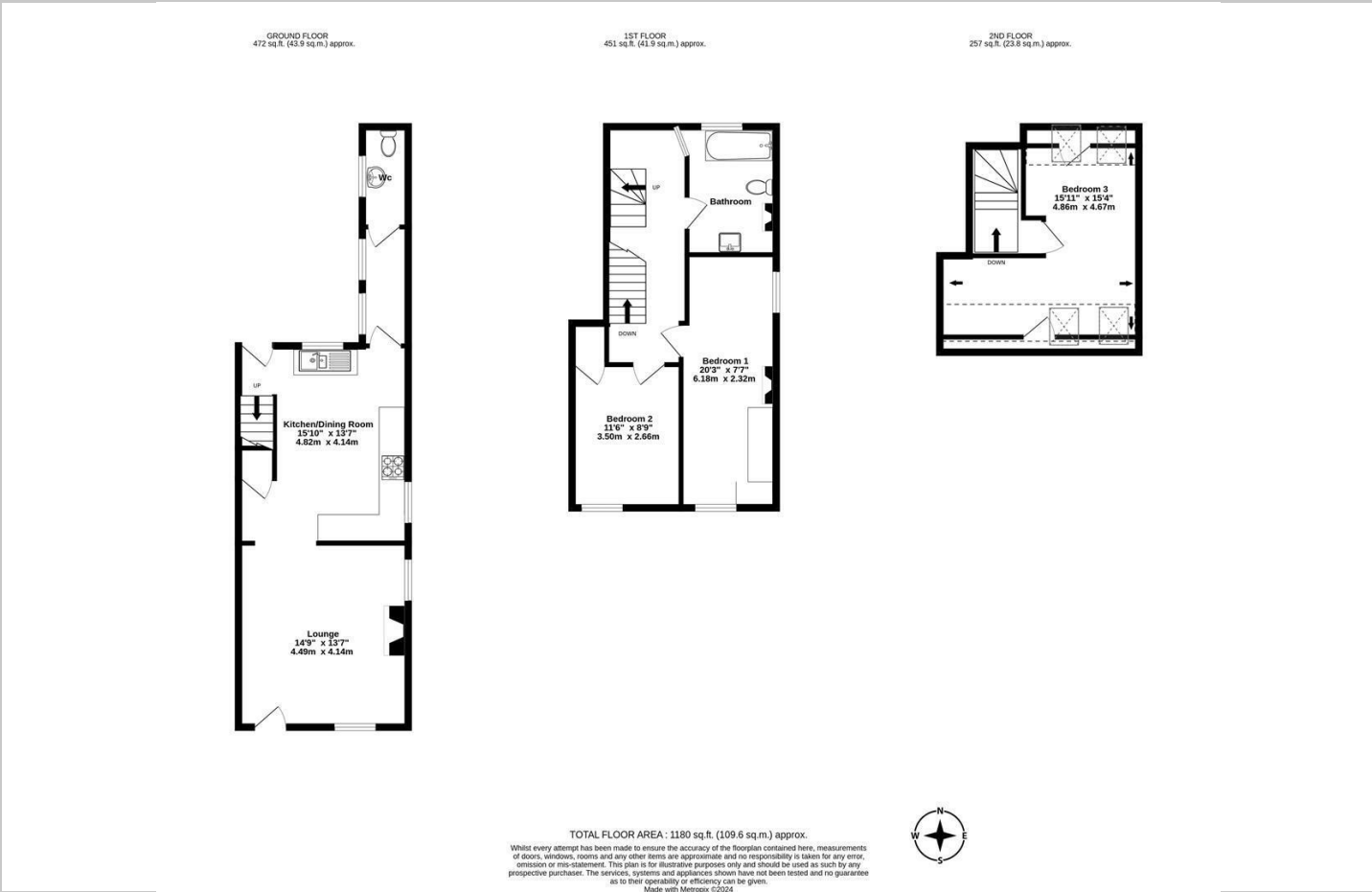
- Stunning Semi-Detached
- Fulford school Catchment
- Large Garden
- Fully Modernised
- Ideal Location
- Three double bedrooms
- Off Street Parking
- Loft Conversion



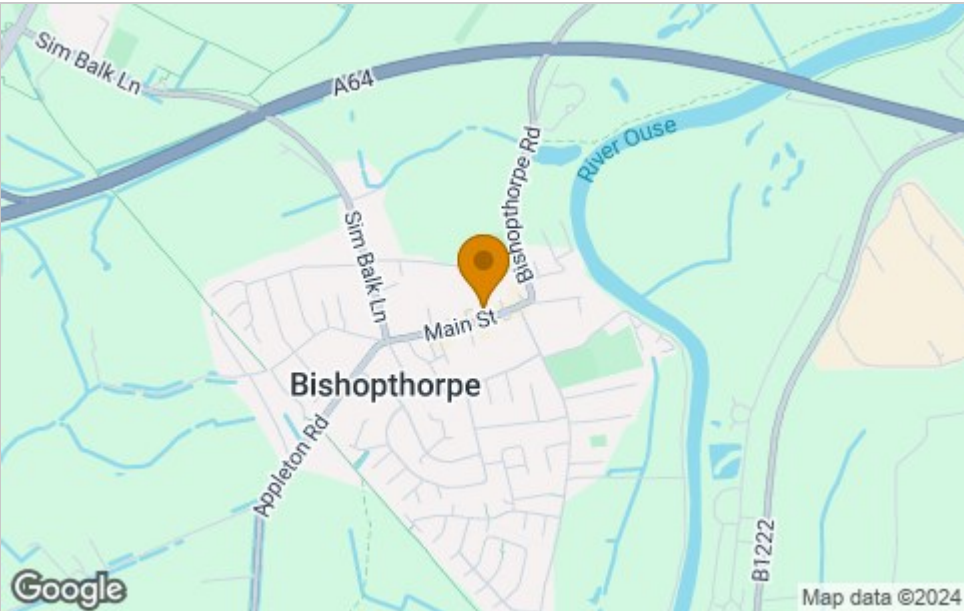




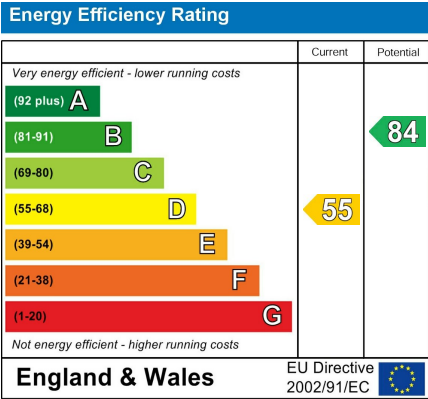
Floor Plan



Area Map



Energy Efficiency Graph



Viewing

Please contact our Naish Estate Agents Office on 01904 653564 if you wish to arrange a viewing appointment for this property or require further information.

These particulars, whilst believed to be accurate are set out as a general outline only for guidance and do not constitute any part of an offer or contract. Intending purchasers should not rely on them as statements of representation of fact, but must satisfy themselves by inspection or otherwise as to their accuracy. No person in this firms employment has the authority to make or give any representation or warranty in respect of the property.